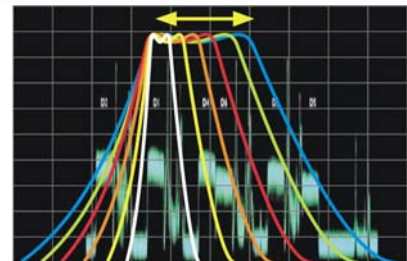




Programmable Selective Amplifier Agil



10 UHF FILTERS 1 to 6 CHANNELS WIDE



* not to scale

- 1 10 UHF filters fully programmables.
- 2 Each filter can be programmed from channel 21 to channel 69.
- 3 Each UHF filter can be programmed to amplify from 1 to 6 neighbour channels.
- 4 Fully shielded "zamak" die-cast housing.
- 5 BIII and FM inputs.
- 6 Satellite IF amplification as an option.
- 7 50 or 40 dB (software selectable) overall UHF Gain.
- 8 Software controlled selection of antenna input connected to the filters.
- 9 Easy programming by 8 digits display showing simultaneously all parameters (Filter number, Attenuation, lower and higher channel) of a filter in a row.
- 10 8 set-ups Memory card for copy and retrieve system configuration to speed typical installations.
- 11 Easy power supply maintenance/exchange by removing only 4 screws, and without antenna cabling disconnection.
- 12 Power switch-off of internal pre-amplifiers for unused antenna inputs to save power consumption, and avoid unexpected noise.
- 13 Low noise Gallium Arsenide input stages.
- 14 High level Low intermodulation Gallium Arsenide output stages.
- 15 High efficiency switch mode power supply.
- 16 "One Shot" electronic filter programming instead of industry standard sequential sample and hold, allows faster set-up and lower residual ripple noise.
- 17 Fully compatible with digital and analogue programs.
- 18 Password protected.



Programmable Selective Amplifier Agil

Bands	FM	BIII-DAB	UHF 1	UHF 2	UHF 3	SAT-IF (1)
Frequencies MHz	87.7-108	174-230	470-862	470-862	470-862	950-2150
Gain	40 dB	40 dB	Soft. Switchable 50 dB or 40 dB			40 dB
Gain Regulation	-18 dB	-18 dB	-23 dB			-14 dB
Tilt Regulation	-	-	-			-10 dB
Bandwidth	Fixed	Fixed	1 to 6 channels			Fixed
Max. Input Level	85 dBµV	85 dBµV	85 dBµV			90 dBµV
Antenna to filters configuration	-	-	Ant.1: 6 Ant.1: 6 Ant.1: 9 Ant.1: 10	Ant.2: 3 Ant.2: 4 Ant.2: 0 Ant.2: 0	Ant.3: 1 Ant.3: 0 Ant.3: 1 Ant.3: 0	-
Max. Output Level (1 RF output)	123 dBµV @ -60dBc					118dBµV @ -35dBc
Max. Output Level (2 RF outputs + 1 SAT output)	119 dBµV @ -60dBc					118dBµV @ -35dBc
Noise Figure	6 dB	6 dB	8 dB			8dB
Selectivity	40dB@ BI 30dB @BIII	50dB@FM 40dB@UHF	26 dB @ +/- 16 MHz from channel boundaries			40 dB @ UHF
LNB Voltage	13VDC/18VDC; 13VDC+22KHz; 18VDC+22KHz or OFF (*only AGIL-T1S/T2S)					
Mains Voltage	230 VAC +/-10%					
Power Consumption	10 VA AGIL-T or 17 VA AGIL-T1S/T2S					
Operating Temperature	0° a +50°C up to 90% humidity					
Dimensions :	283x153x41 mm					
Protection category:	IP30 – Indoor mounting					

Models			
Part Nr.	Reference	Description	EAN-13
9101105	AGIL-T	Programmable Selective Head-end 10 filters UHF + BIII + FM	8432252079794
9101106	AGIL-TS	Program. Selective Head End 10 UHF filters +Sat IF - 1 Output	8432252079800
9101107	AGIL-T2S	Program. Selective Head End 10 UHF filters +Sat IF - 2 Outputs	8432252079817

Programming display captures (example)



Overall Amplifier Programming – 00

Gain – 50
Antenna configuration – 122
Antenna input one connected to filters 1 to 6
Antenna input two connected to filters 7 to 9, and to 10



Filter being programmed : 10

Gain regulation : 20 dB (100 steps : 00 to 99)
Filter Lower Channel : 52
Filter Higher Channel : 57



Satellite Band Programming

Sat selection : 19
Gain : 40 dB
Tilt : -9 dB
22KHz : ON
LNB voltage : +18 VDC

IRCO Sistemas de Telecomunicación S.A.
Via Sergia 98
08302 Mataró
Spain

Tel : +34 93 757 67 66
Fax : +34 93 757 68 34
E-mail : irco@irco.net
Web : www.irco.net